

The Role of the NLM in Fostering Interoperability

17th General Meeting of HSPC Joint with CIIC

Patricia Flatley Brennan, RN, PhD

Director

National Library of Medicine



U.S. National Library of Medicine



U.S. National Library of Medicine

Transforming Data into Knowledge *and knowledge into health*

Strategic Plan 2017-2027

Patricia Flatley Brennan, RN, PhD
NLM Director



NLM Strategic Plan

Transforming Data into Knowledge



Accelerate
discovery and
advance health
through data-
driven research



Reach more
people in more
ways through
enhanced
dissemination
and engagement



Build a workforce
for data-driven
research and
health



U.S. National Library of Medicine



Accelerate discovery and advance health through data-driven research

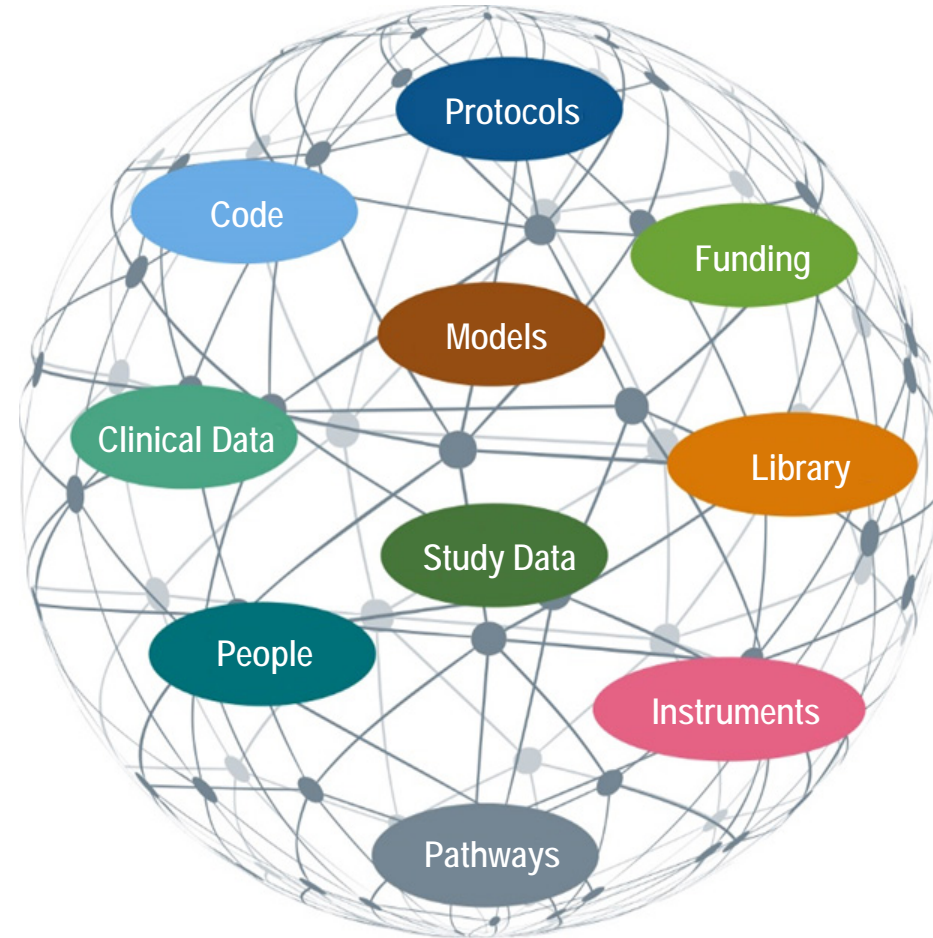


U.S. National Library of Medicine



Fostering a ecosphere of discovery

digital research objects



U.S. National Library of Medicine

RRIDs characterize Methods

- identify the model organisms, cells lines, antibodies, and tools (such as software or databases) you have used
- Blogs, software tool kits, algorithm implementation
- include Research Resource Identifiers (RRIDs) within the materials and methods section of their papers

doi's characterize objects

- Complete declarations (objects, articles, books)
- ISO standard, computational registry



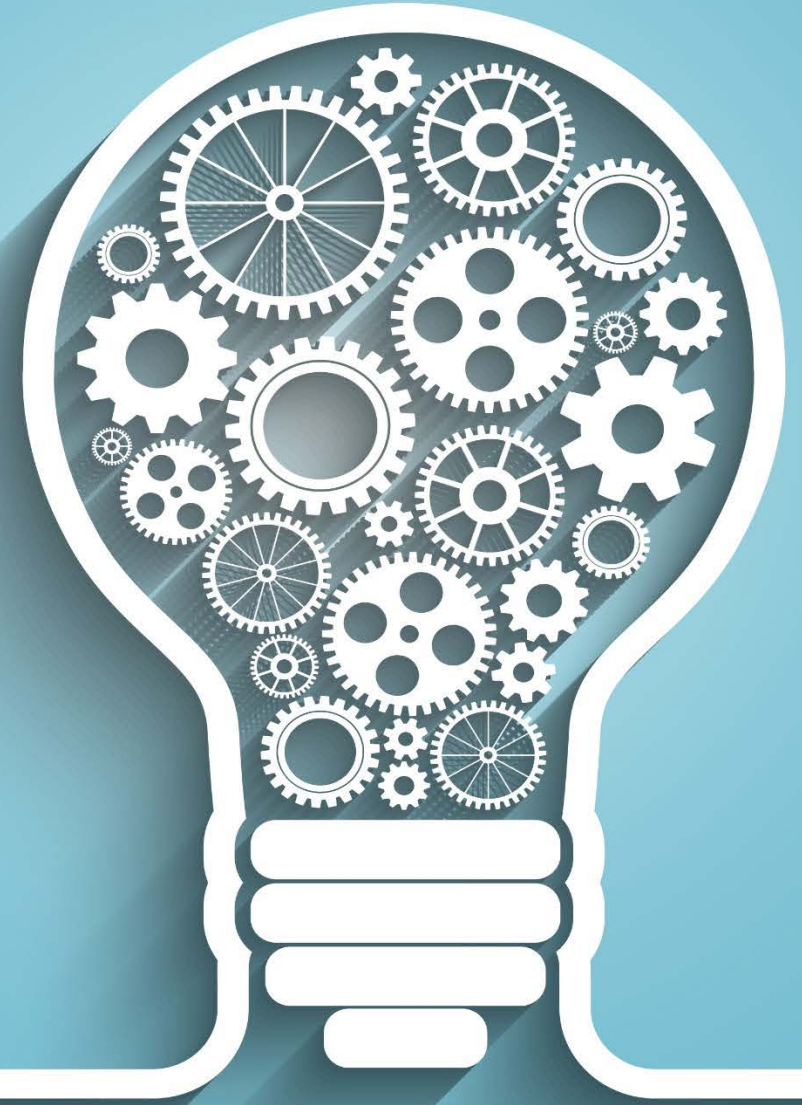
**Foster distinctiveness of NLM as a
reliable, trustable source
of health information & biomedical data**



The 21st Century Collection

- Innovative attribution
- Automated indexing
- Personalized presentation & delivery
- Interim products of research

CUSTODIAN | CONNECTOR | DISCOVERER



U.S. National Library of Medicine



Build a workforce for data-driven research and health



U.S. National Library of Medicine



Expand & enhance research training for biomedical informatics & data science



U.S. National Library of Medicine

The National Institutes of Health 27 Institutes and Centers –\$37B

NLM

- OD
- NINR
- NCI
- NIAMS
- NHGRI
- NCCIH
- NHLBI
- NINDS
- NIMH
- NIDA
- NIMHD
- NIA
- NIAID
- NIDCR
- NCATS
- NEI
- NIBIB
- NICHD
- NIDDK
- NIAAA
- NIDCD
- CSR
- CC
- CIT
- NIHES
- NIGMS
- FIC



U.S. National Library of Medicine

NIH Strategic Plan for Data Science

- **Requested by Congress:** In its fiscal year 2017 report, the Committee directed NIH to work with its external partners and stakeholders to provide the Committees on Appropriations of the House of Representatives and the Senate a detailed strategic plan **by May 5, 2018**, spelling out it how intends to make big data sustainable, interoperable, accessible, and usable.

	Data Infrastructure	Modernized Data Ecosystem	Data Mgmt, Analytics, & Tools	Workforce Development	Stewardship and Sustainability
GOALS	<ul style="list-style-type: none">• Optimize data storage and security• Connect NIH data systems	<ul style="list-style-type: none">• Modernize data repository ecosystem• Support storage and sharing of individual datasets• Better integrate clinical and observational data into biomedical data science	<ul style="list-style-type: none">• Support useful, generalizable, & accessible tools and workflows• Broaden utility of and access to specialized tools• Improve discovery & cataloging resources	<ul style="list-style-type: none">• Enhance the NIH data-science workforce• Expand the national research workforce• Engage a broader community	<ul style="list-style-type: none">• Develop policies for a FAIR data ecosystem• Enhance stewardship
OBJECTIVES					



NIH Strategic Plan for Data Science:

Cross-Cutting Themes

- Support **common infrastructure and architecture** on which more specialized platforms can be built and interconnected
- **Leverage commercial tools, technologies, services, and expertise**; adopt and adapt tools and technologies from other fields
- Enhance the nation's biomedical **data-science research workforce**: improved training programs, novel partnerships
- Ensure NIH-supported data resources are **FAIR**
- Ensure **information security** of patient and participant data
- Improve the ability to capture, curate, validate, store, and analyze **clinical data** for biomedical research
- With community input, develop, promote—and refine as needed—**data standards**
- **Coordinate and collaborate** with federal, private and international funding agencies and organizations to promote **economies of scale and synergies and prevent unnecessary duplication**

NLM Initiatives to Promote Interoperability

- Central coordinating body for clinical terminology standards in HHS in close collaboration with ONC
- Supports research in knowledge representation
- Key initiatives:
 - Terminology and data standard support (SNOMED, RxNORM, LOINC)
 - MedlinePlus Connect – 11M links a year
 - Common Data Elements Value Set Authority



NIH Clinical Common Data Elements

- **Formed in 2012 as CDE initiatives blossomed at NIH**
 - Foster communication, collaboration, & coordination across ICOs
 - Reduce duplication, share lessons learned, & identify opportunities
- **Members from all ICOs (100)**
 - Meet every other week (35 – 45)
- **Subgroups address specific issues**
 - Harmonizing CDE-related infrastructure across NIH
 - Defining CDE-related terms
 - Describing best practices for developing & implementing CDE initiatives
- **Web-based resources for CDE efforts**
 - NIH CDE Repository
 - NIH CDE Portal to NIH CDE initiatives & related resources



Home

NIH encourages the use of common data elements (CDEs) in clinical research, patient registries, and other human subject research in order to improve data quality and opportunities for comparison and combination of data from multiple studies and with electronic health records. This portal provides access to information about NIH-supported CDEs, as well as tools and resources to assist investigators developing protocols for data collection. [What is a CDE?](#)

Webinar: Overview of NIH CDE Initiatives (September 8, 2015) [View slides / watch recording](#)

NIH CDE Collections

Sets of CDEs that have been identified for use in particular types of research or research domains after a formal evaluation and selection process.

[Summary Table](#)

[Subject Areas](#)

NIH CDE Tools and Resources

Databases and repositories of data elements and case report forms that may assist investigators in identifying and selecting data elements for use in their projects.

[Summary Table](#)

[Subject Areas](#)

NIH CDE Repository

The Repository is a platform for identifying related data elements in use across diverse areas, for harmonizing data elements, and for linking CDEs to other existing standards and terminologies.

[CDE Repository](#)

Some NIH programs have issued [specific guidance](#) for using CDEs in funded research.



The NIH Common Data Elements (CDE) Repository has been designed to provide access to structured human and machine-readable definitions of data elements that have been recommended or required by NIH Institutes and Centers and other organizations for use in research and for other purposes.

Visit the [NIH CDE Resource Portal](#) for contextual information about the repository.

The screenshot shows the NIH CDE Repository interface for a specific CDE. The page title is "RAPIDD registry visit consent refusal null". The interface includes a navigation bar at the top with links for "CDEs", "Forms", "Boards", "Create", "Quick Board (4)", and "Help". Below the title, there are action buttons: "Export", "Add to Quick Board", "Add to Board", "Copy", and "Discuss".

The main content area is divided into two columns. The left column contains a sidebar with the following sections: "General Detail", "Permissible Values" (highlighted in blue), "Naming", "Classification", "Mesh Topic", "Concepts", "Reference Documents", "Properties", "Identifiers", "Attachments", "History", "Score Derivations", and "Validation Rules".

The right column displays the details for the "Permissible Values" section. It includes a "Values Allowed" section with a "Value Type" dropdown set to "Value List", a "Unit of Measure" checkbox for "N/A", and "Ids" set to "empty". Below this is a "Permissible Value" section with a "Datatype" checkbox. A table lists the permissible values:

Value	Code Name	Code	Code System	Code Description	Actions
<input checked="" type="checkbox"/> 1	<input checked="" type="checkbox"/> No refusal reason given/obtained			<input checked="" type="checkbox"/> N/A	

Below the table are buttons for "+ Add Permissible Value" and "Remove All Values". The "VSAC Value Set" section indicates "No Value Set specified" and has an "Update O.I.D." button.

At the bottom of the page, there is a large black text overlay that reads "Search, Discuss and Collaborate" with a progress indicator below it consisting of five blue squares, the first of which is filled.

- [Browse CDEs](#)
- [Browse Forms](#)
- [Interactive Tour](#)

Summary Table for NIH CDE Initiatives

This table lists summary information for [NIH CDE Initiatives](#). More information on NIH CDE Initiatives: [Subject Areas](#), [Detailed Summaries](#).

Show entries

Search:

Link to Homepage	Link to CDEs	Brief Summary	Number of Elements	Studies and Publications	CDE Resource Contact
Standardized Asthma Outcomes for Clinical Research	Asthma CDEs	The standardized asthma outcomes for clinical research represent recommendations for core (required in future studies), supplemental (to be used according to study aims), and emerging (requiring validation and standardization) outcomes for 7 domains of asthma clinical research outcome measures. Subject Areas More...	10 (adults), 25 (children)	-	NHLBI, NIAID
Chronic Low Back Pain CDEs	cLBP	Recommended minimum dataset for research on chronic low back pain. Subject Areas More...	40	-	NCCAM
Early Detection Research Program	EDRN	CDEs for use in describing samples and data collected as part of cancer biomarker research. Subject Areas More...	1,600	Publications	NCI
eyeGENE	eyeGENE	As part of eyeGENE, common data elements have been developed for collecting phenotypic data associated with more than 30 inherited ophthalmic diseases. Subject Areas More...	200	Studies Publications	NEI
Rare Diseases Registry Program (RaDaR)	GRDR	CDEs to facilitate standardized data collection into the GRDR and to assist organizations in establishing rare disease registries that contribute information to GRDR. Subject Areas More...	75	Publications	GRDR
Quality of Life Outcomes in Neurological Disorders	Neuro-QOL	A core set of quality-of-life questions that address chronic neurologic disorders, plus sets of supplemental questions specific to targeted diseases or subgroups of patients. Subject Areas More...	500	Publications	NINDS
NIDA Substance Abuse Electronic Health Record Data Elements	NIDA EHR	A set of brief screening and initial assessment tools for substance use disorders (SUDs) for use in general medical settings. Subject Areas More...	80+	-	NIDA
NIH Toolbox for Assessment of Neurological and Behavioral Function	NIH Toolbox	An integrated set of tools for measuring cognitive, emotional, motor and sensory function. Subject Areas More...	4 batteries of tests, each with 5-24 tests	Publications	NIH
NINDS Common Data Elements	NINDS CDEs	A core set of data elements for use in NINDS-funded studies, including core and supplementary sets of data elements for use in disease-specific studies. Subject Areas More...	10,000 unique variables, 550+	Studies	NINDS

Subject Areas of NIH CDE Initiatives

This table lists the [Subject Areas](#) covered by [NIH CDE Initiatives](#). More information on NIH CDE Initiatives: [Summary Table](#), [Detailed Summaries](#)

XX indicates that the subject area is a major focus, while X indicates that the subject area is a minor focus. Subject areas listed here may change as additional Resources are added to the CDE Resource Portal or as existing Resources are expanded into new subject areas (subject areas assessed in January 2013).

Show entries

Search:

Subject Area	Asthma CDEs	cLBP	EDRN	eyeGENE	GRDR	Neuro-QOL	NIDA EHR	NIH Toolbox	NINDS CDEs	PhenX	PROMIS
Respiratory	XX		X						X	XX	X
Alcohol, Tobacco, and Other Substances			X				XX		X	XX	
Cancer			X							XX	
Cardiovascular and Circulatory									XX	XX	
Demographics and Patient Contact Info.			X	X	XX				XX	XX	
Diabetes and Other Endocrine									X	XX	
Environmental Exposures			X						X	XX	
Excretory			X						X		
Gastrointestinal			X						X	XX	
Infectious Diseases and Immunity									X	XX	
Laboratory Tests			X	XX					X	X	
Medical History			X			XX			XX	X	
Medications, Devices, and Treatments		XX	X			XX			XX	X	
Neurology		X				XX		XX	XX	XX	

Value Sets

A ***list of codes*** and their terms, derived from standard vocabularies, that ***define clinical concepts for a particular purpose*** (like diabetes, blood glucose tests, antibiotic prescriptions) to support effective and interoperable health information exchange.



Value Set Authority Center

[Welcome](#)[Search Value Sets](#)[Authoring](#)[Collaboration Management](#)[Download](#)[Help](#)

Welcome to the NLM Value Set Authority Center (VSAC)

For VSAC announcements, please subscribe to the [VSAC Updates listserv](#).

The Value Set Authority Center (VSAC) is provided by the National Library of Medicine (NLM), in collaboration with the Office of the National Coordinator for Health Information Technology and the Centers for Medicare & Medicaid Services.

The VSAC provides downloadable access to all official **versions** of vocabulary **value sets** contained in the 2014 Clinical Quality Measures (CQMs). Each value set consists of the numerical values (codes) and human-readable names (terms), drawn from standard vocabularies such as SNOMED CT®, RxNorm, LOINC and ICD-10-CM, which are used to define clinical concepts used in clinical quality measures (e.g., patients with diabetes, clinical visit).

The content of the VSAC will gradually expand to incorporate value sets for other use cases, as well as for new measures and updates to existing measures.

Viewing or downloading value sets requires a free [Unified Medical Language System® Metathesaurus License](#), due to usage restrictions on some of the **codes included in the value sets.**

The [Data Element Catalog](#) contains the complete list of 2014 CQMs and value set names.

[Copyright](#), [Privacy](#), [Accessibility](#)

U.S. National Library of Medicine, 8600 Rockville Pike, Bethesda, MD 20894

[National Institutes of Health](#), [Health & Human Services](#)

[Freedom of Information Act](#), [Contact Us](#)



Last updated: March 8, 2016

First published: October 25, 2012

Version: 2.10.8



U.S. National Library of Medicine

VSAC – Search Value Sets

Welcome Search Value Sets Authoring Collaboration Management Download Help

Search the NLM Value Set Repository

Query: Search

Apply Filters Clear Filters

Narrow search results by selecting from pull-down menus below:

CMS eMeasure (NQF Number)

Quality Data Model Category

Steward

Meaningful Use Measures

Code System

Search Results [Export Search Results \(Excel\)](#)

Select a hyperlinked OID to see its value set details.

Matched Value Sets

Download View Toggle Clear Page 1 of 19 20 View 1 - 20 of 365

<input type="checkbox"/>	Name	Type	Code System	Steward	OID
<input type="checkbox"/>	Healthcare Agent or Proxy Choices	Extensional	LOINC	ADVault	2.16.840.1.113762.1.4.1046.35
<input type="checkbox"/>	Advance Care Plan Personal Commitment Level	Extensional	LOINC	ADVault	2.16.840.1.113762.1.4.1046.37
<input type="checkbox"/>	Personal Goal Preference and Priority Choices	Extensional	LOINC	ADVault	2.16.840.1.113762.1.4.1046.38
<input type="checkbox"/>	Heart Rate	Grouping	LOINC	AMA-PCPI	2.16.840.1.113883.3.526.3.1176
<input type="checkbox"/>	Standardized Tools for Assessment of Cognition	Extensional	LOINC	AMA-PCPI	2.16.840.1.113883.3.526.2.1069
<input type="checkbox"/>	Standardized Tools for Assessment of Cognition	Grouping	LOINC	AMA-PCPI	2.16.840.1.113883.3.526.3.1006
<input type="checkbox"/>	HCV Antibody Test	Extensional	LOINC	AMA-PCPI	2.16.840.1.113762.1.4.1056.72
<input type="checkbox"/>	Systolic Blood Pressure	Extensional	LOINC	AMA-PCPI	2.16.840.1.113883.3.526.2.1044
<input type="checkbox"/>	Ejection Fraction	Extensional	LOINC	AMA-PCPI	2.16.840.1.113883.3.526.2.1238
<input type="checkbox"/>	Tobacco Use Screening	Extensional	LOINC	AMA-PCPI	2.16.840.1.113883.3.526.2.1372
<input type="checkbox"/>	Tobacco Use Screening	Grouping	LOINC	AMA-PCPI	2.16.840.1.113883.3.526.3.1278
<input type="checkbox"/>	LDL-C Laboratory Test	Extensional	LOINC	AMA-PCPI	2.16.840.1.113883.3.526.2.260
<input type="checkbox"/>	Macular Exam	Extensional	LOINC	AMA-PCPI	2.16.840.1.113883.3.526.2.1364
<input type="checkbox"/>	Cup to Disc Ratio	Extensional	LOINC	AMA-PCPI	2.16.840.1.113883.3.526.2.1402
<input type="checkbox"/>	Optic Disc Exam for Structural Abnormalities	Extensional	LOINC	AMA-PCPI	2.16.840.1.113883.3.526.2.1403
<input type="checkbox"/>	Optic Disc Exam for Structural Abnormalities	Grouping	LOINC	AMA-PCPI	2.16.840.1.113883.3.526.3.1334



Value Set Details

[Apply Filters](#) [Clear Filters](#)

Narrow search results by selecting from pull-down menus below:

CMS eMeasure (NQF Number)

Select

Quality Data Model Category

Select

Steward

Select

Meaningful Use Measures

FY 2014 EH, CY 2014 EP

Code System

LOINC

Search the NLM Value Set Repository

Query:

[Search](#)

[Search Results](#)

[Value Set Details](#)

Value Set Information Available Updates: [Approved By Steward](#) Expansion Versions: [MU2 Update 2017-01-06](#) [Export Value Set Results \(Excel\)](#)

[Metadata](#)

[Description](#)

[Measure](#)

Name:

Neutrophil count

Type:

Extensional

Steward:

Lantana

OID:

2.16.840.1.113883.3.666.5.1035

Definition Version: [?](#)

20160331

Program:

CMS, MU2 Update 2017-01-06 using this value set

Value Set Members

Expanded Code List

[View](#) [Toggle](#) [Clear](#)

Page 1 of 1

20

View 1 - 14 of 14

Code	Descriptor	Code System	Version	Code System OID
23761-0	Neutrophils/100 leukocytes in Blood by Manual count	LOINC	2.54	2.16.840.1.113883.6.1
30229-9	Band form neutrophils [# /volume] in Blood by Automated count	LOINC	2.54	2.16.840.1.113883.6.1
32200-8	Segmented neutrophils/100 leukocytes in Blood by Automated count	LOINC	2.54	2.16.840.1.113883.6.1
35332-6	Band form neutrophils/100 leukocytes in Blood by Automated count	LOINC	2.54	2.16.840.1.113883.6.1
751-8	Neutrophils [# /volume] in Blood by Automated count	LOINC	2.54	2.16.840.1.113883.6.1
753-4	Neutrophils [# /volume] in Blood by Manual count	LOINC	2.54	2.16.840.1.113883.6.1
761-7	Neutrophils [# /volume] in Urine by Automated count	LOINC	2.54	2.16.840.1.113883.6.1
763-3	Band form neutrophils [# /volume] in Blood by Manual count	LOINC	2.54	2.16.840.1.113883.6.1
764-1	Band form neutrophils/100 leukocytes in Blood by Manual count	LOINC	2.54	2.16.840.1.113883.6.1



U.S. National Library of Medicine

VSAC Authoring Tool – Query for Codes

Code Systems | UMLS Concepts | My Value Sets

Search Code System ?

Query:

Include inactive codes

Criteria: neutrophils

Code

← Add to Value Set | Page 1 of 29 | 20

<input type="checkbox"/>	Code	Descriptor	Code System	TT			
<input type="checkbox"/>	<u>11115-3</u>	Neutrophils/100 cells in Bone marrow by Manual count	LOINC	LC			
<input type="checkbox"/>	<u>14277-8</u>	Neutrophil cytoplasmic Ab.classic [Titer] in Serum by Immunofluorescence	LOINC	LC			
<input type="checkbox"/>	<u>14278-6</u>	Neutrophil cytoplasmic Ab.perinuclear [Titer] in Serum by Immunofluorescence	LOINC	LC			
<input type="checkbox"/>	<u>16290-9</u>	Neutrophils [Presence] in Stool	LOINC	LC			
<input type="checkbox"/>	<u>17346-8</u>	Neutrophil Ab [Presence] in Serum by Immunofluorescence	LOINC	LC	Laboratory	Yes	2.56
<input type="checkbox"/>	<u>17347-6</u>	Neutrophil Ab [Units/volume] in Serum by Immunofluorescence	LOINC	LC	Laboratory	Yes	2.56

Filter By Code System:

- LOINC
- All
- CDCREC
- CDT
- CPT
- CVX
- HCPCS
- HSLOC
- ICD10CM
- ICD10PCS
- ICD9CM
- LOINC
- NCI
- NUCCPT
- RXNORM
- SNOMEDCT
- SOP
- UMLS
- HL7V2.5**
- AdministrativeSex
- DischargeDisposition

LOINC



What are Value Sets Used For?

- Clinical Quality Measurement (67%)
- Clinical Data Registries
- Computable Clinical Phenotyping from EHRs
- Public Health Reporting
- Electronic Lab Reporting
- EHR Structured Documents (C-CDA)
- Reportable Conditions Alerts (RCKMS)
- National and International EHR Patient Summary Exchange



CLINICAL QUALITY MEASURE

(implementation)

Hemoglobin A1c Test for Pediatric Patients

List of LOINC codes

Tests for HbA1c

Numerator: # diabetic patients [age 5-17] tested for HbA1c

Denominator: # diabetic patients [age 5-17]

Type 1 or Type 2 diabetes
[Excludes gestational diabetes]

List of SNOMED CT or
ICD-10-CM codes

Data Element

Requires date of birth



Current Value Set Contributors in VSAC

American Academy of Neurology
American Nurses Association
American Society of Clinical Oncology
Austin Regional Clinic
Centers for Medicare and Medicaid Services
Children's Hospital of Philadelphia
Emergency Care Research Institute
Federal Health Interoperability Modeling and Standards
Minnesota Community Measurement
National Minority Quality Forum
Pharmacy e-Health Information Technology Collaborative
Council of State and Territorial Epidemiologists
Vanderbilt University Electronic Medical Record and Genomics Network





Example API Call and Resulting XML

Use Case

Retrieve all value sets and metadata for value set OID **2.16.840.1.113762.1.4.1095.51**

API Code

GET <https://vsac.nlm.nih.gov/vsac/svs/RetrieveMultipleValueSets?id=2.16.840.1.113762.1.4.1095.51&ticket=ST-1309720-6jasRzoISNuFUtKyN9fK-cas>

Resulting XML

```
- <ns0:RetrieveMultipleValueSetsResponse>
- <ns0:DescribedValueSet ID="2.16.840.1.113762.1.4.1095.51" displayName="Enteral Nutrition Composition" version="20160929">
+ <ns0:ConceptList></ns0:ConceptList>
- <ns0:Source>Academy of Nutrition and Dietetics</ns0:Source>
- <ns0:Purpose>
(Clinical Focus: Enteral formulas and modular components intended for infants, children and adults),(Data Element Scope: These terms are part of an
intervention/recommendation for nutrition care via enteral delivery.),(Inclusion Criteria: Any formula or modular component that alone or together with
another substance constitute an enteral formula for an individuals.),(Exclusion Criteria: Nutrition components administered via IV or per oral consumption.)
</ns0:Purpose>
- <ns0:Definition>
(2.16.840.1.113762.1.4.1095.50:Enteral Nutrition Composition)
</ns0:Definition>
<ns0:Type>Grouping</ns0:Type>
<ns0:Binding>Dynamic</ns0:Binding>
<ns0:Status>Active</ns0:Status>
```

...truncated



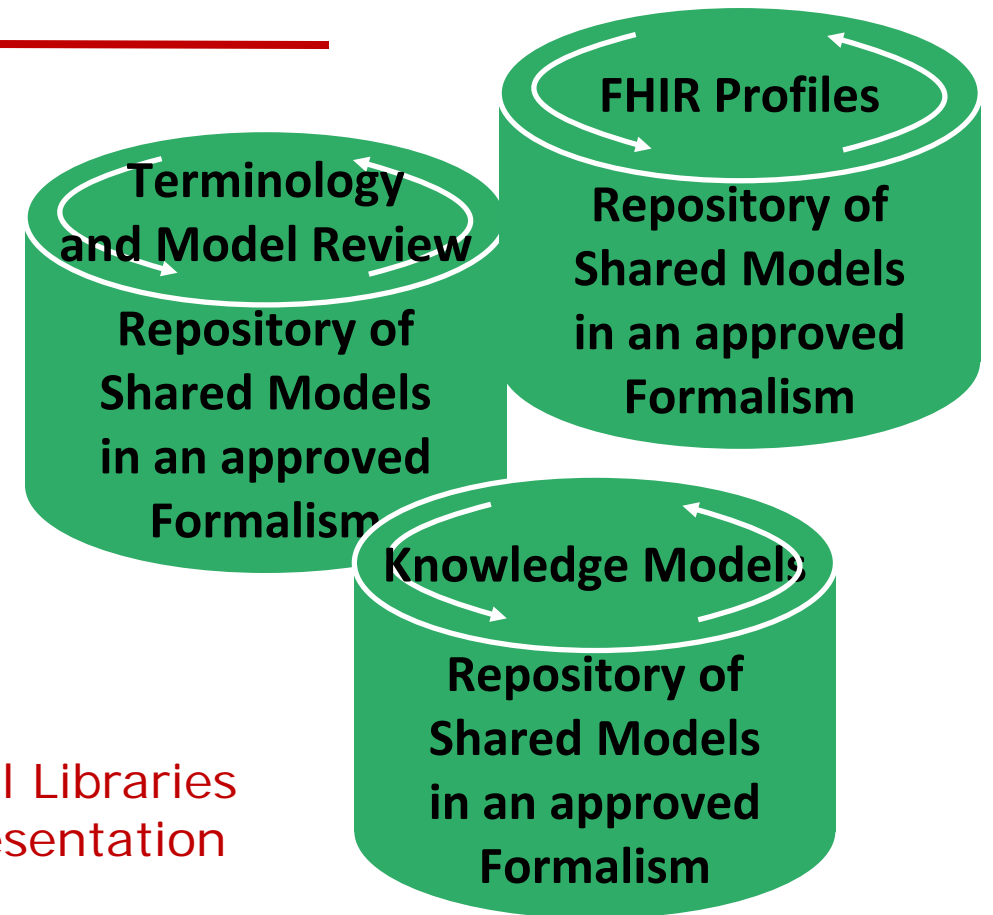
VSAC Summary

- Agnostic tools
- Standard terminologies enable semantic interoperability
- Computational data comparison: requires semantic interoperability



WHAT IS THE ROLE OF THE LIBRARY IN FOSTERING...

- Consistent definitions of data elements
- Standard data exchange
- Standardized knowledge representation and content exchange



Terminology and Model Libraries
Clinical Content Representation



Reaching NLM

<https://vsac.nlm.nih.gov>

Maureen M. Madden
Value Set Authority Center, Project Lead
mmadden@mail.nih.gov



@NLM_news
@NLMdirector



patti.brennan@nih.gov



U.S. National Library of Medicine